



SHEET METAL DIVISION

METAL FALSE CEILING
METAL WALL CLADDING



FALSE CEILING CLIP IN SYSTEM

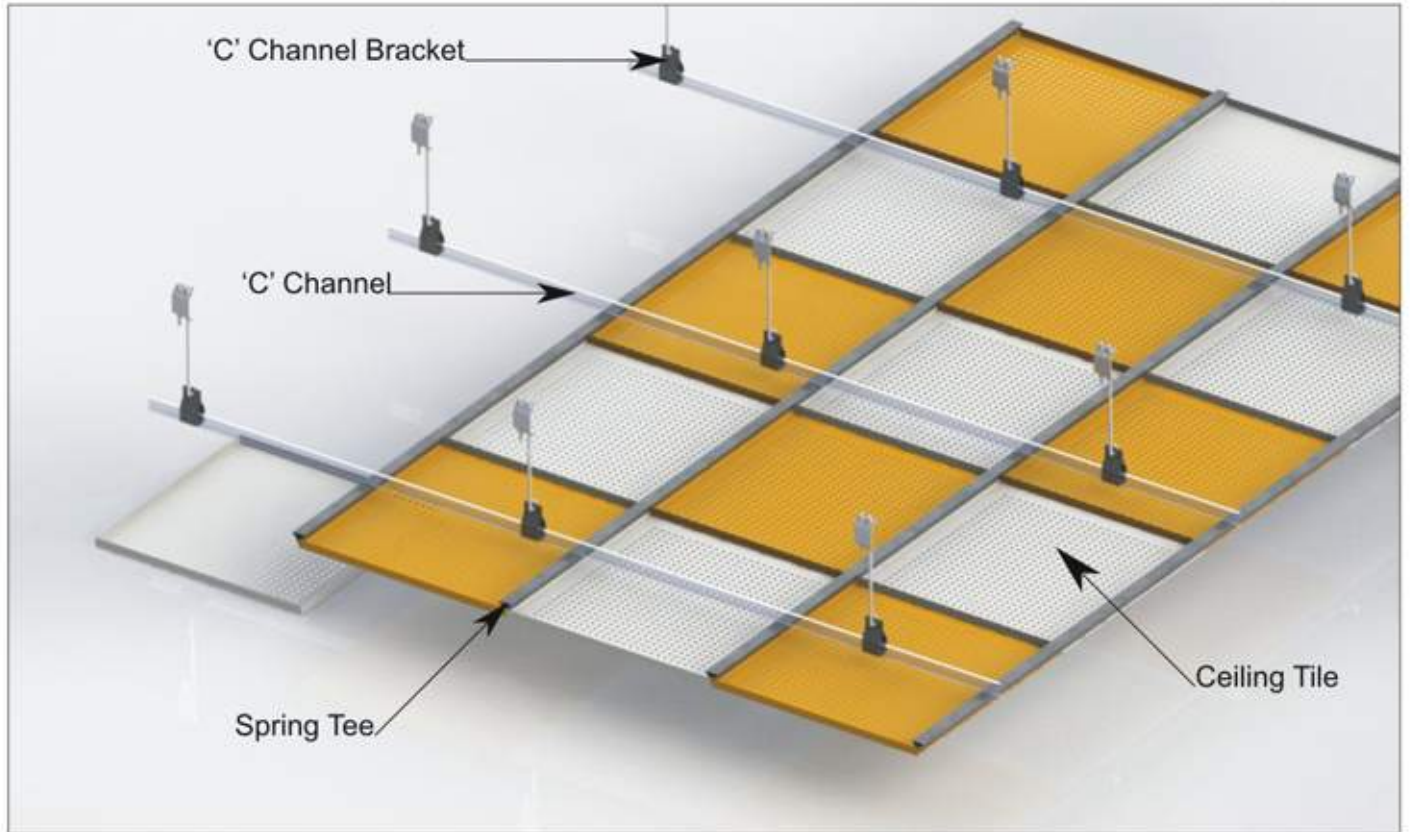
The system is a range of square clip in metal tiles with concealed grid system.

Clip in System offers simple and easy access for maintenance and Installation without using special tool.



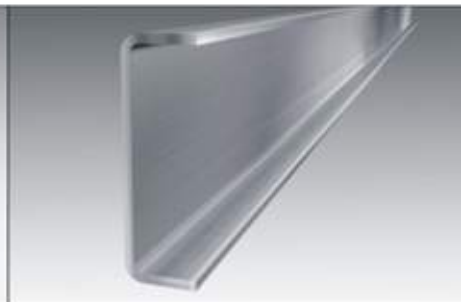
FALSE CEILING CLIP IN SYSTEM

Edge Detail: Square Edge Assembly System



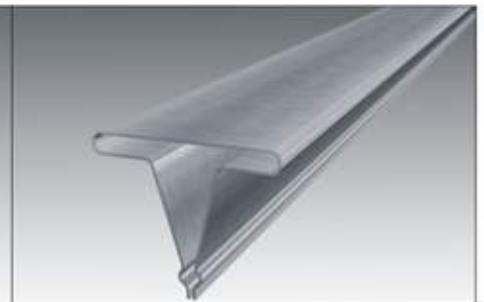
'C' CHANNEL BRACKET

Galvanized steel used to carrying the main channel



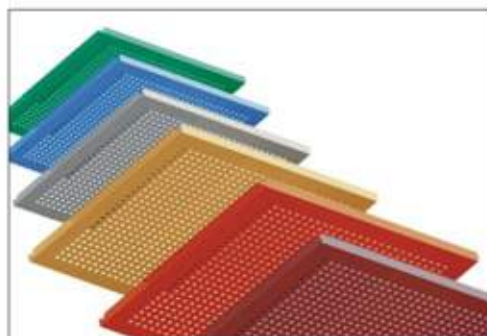
'C' CHANNEL

Main channel galvanized steel 12x38x12 mm
Use as main support for spring tee and tiles.



SPRING TEE

Galvanized steel 35 x 29 mm is acting as main supporting profile for tile.



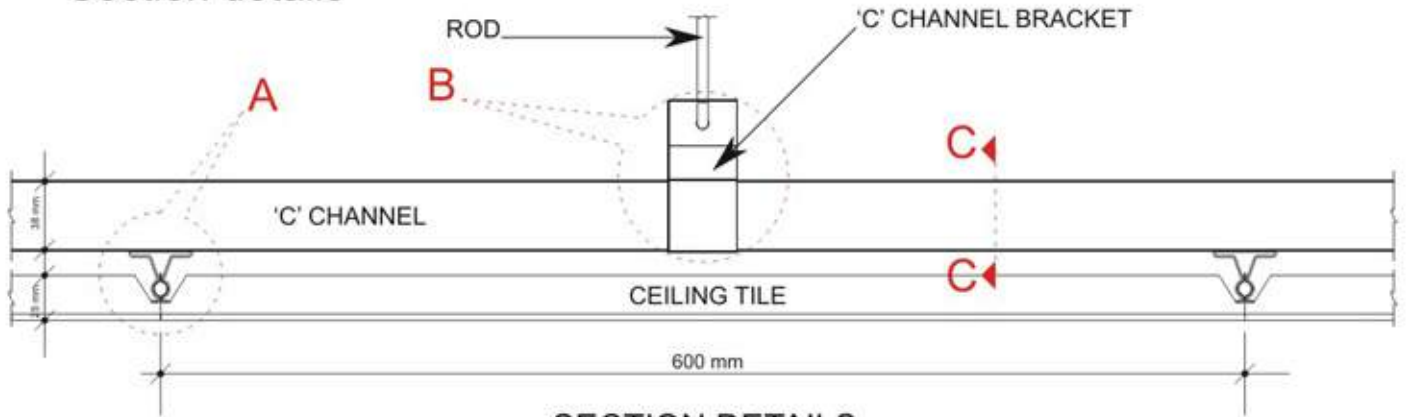
CEILING TILE

Standard size -600x600 mm, Thickness 0.5 to 1 mm.
Panels are Electrostatic Powder Coated (Standard RAL Colours)

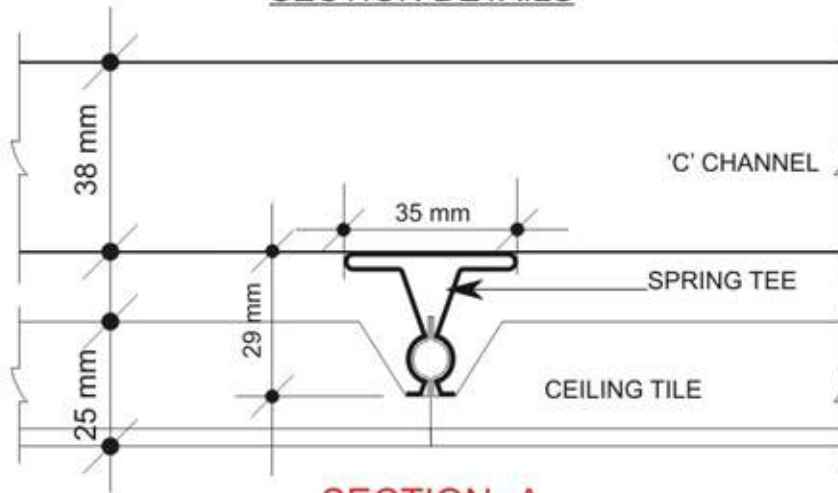
FALSE CEILING CLIP IN SYSTEM

Edge Detail: Square Edge

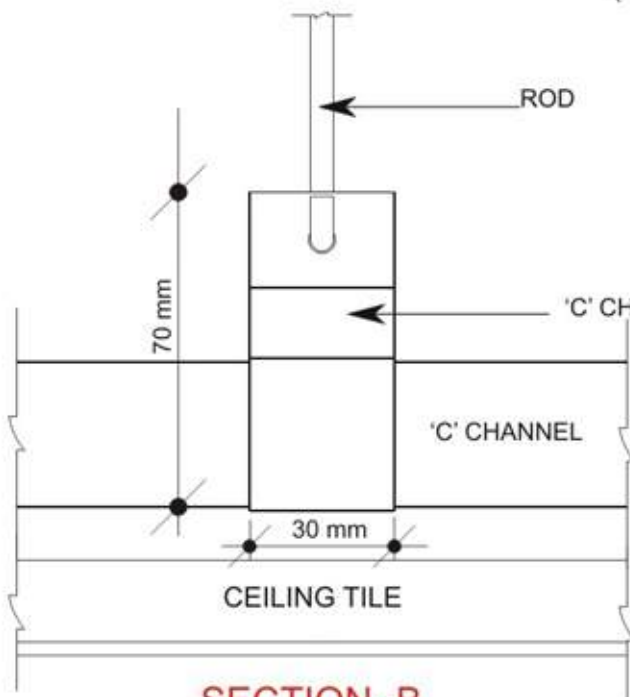
Section details



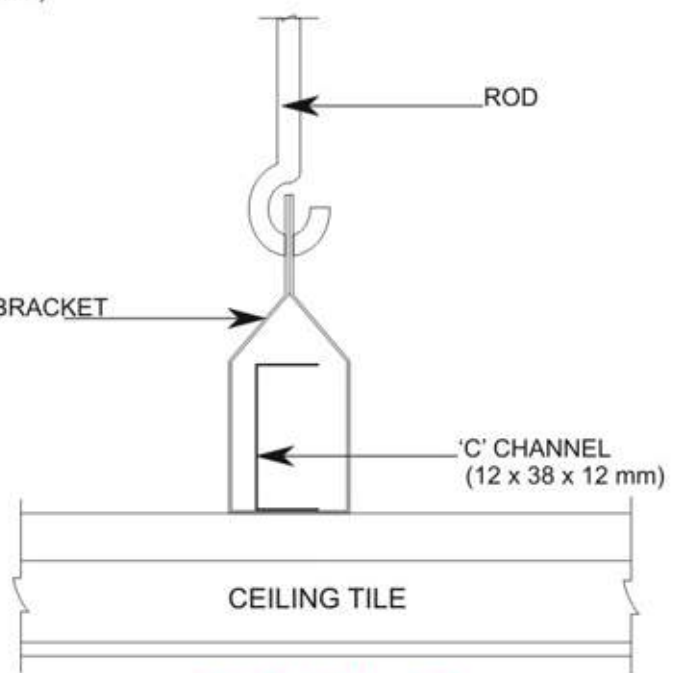
SECTION DETAILS



SECTION -A (SPRING TEE)



SECTION -B ('C' CHANNEL BRACKET)

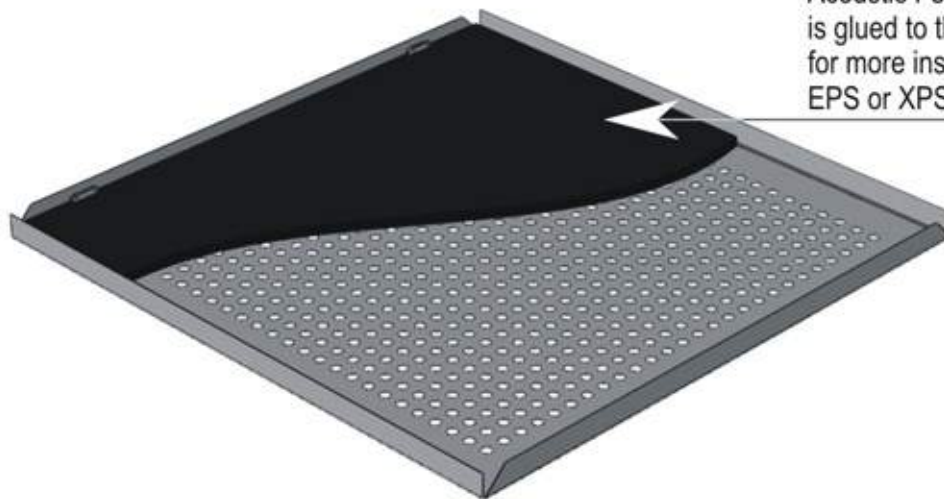


SECTION -C-C ('C' CHANNEL BRACKET)

FALSE CEILING CLIP IN SYSTEM

Edge Detail: Square Edge

Acoustic Insulation



Acoustic Felt of 0.2mm thickness is glued to the Tile. Over the Acoustic Felt, for more insulation, Rockwool, PUF, Gypsum, EPS or XPS cut to size sheets can be fixed.



Rock wool Sheets



PUF Sheets



Gypsum Sheets



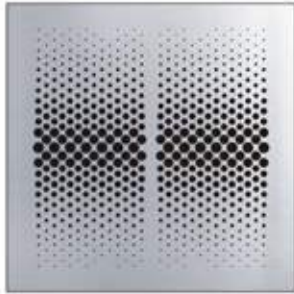
EPS/ XPS Sheets

The ceiling panels are provided with non-woven, non-flammable, acoustic black felt glued over the whole perforated area. The acoustic felt is a sound absorption layer of 0.2mm thick having NRC 0.7 to 0.9. Additionally, Rockwool, Polystyrene or Gypsum insulation sheets of 25- 50mm thick can be fitted inside the ceiling panels to provide high performance of acoustic insulation, thermal insulation, and fire protection.

FALSE CEILING CLIP IN SYSTEM

Edge Detail: Square Edge

Range of Size & Designs



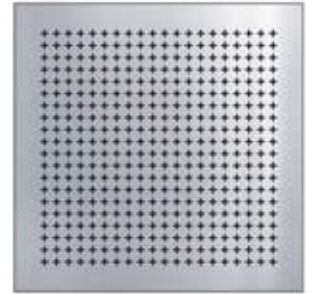
Type-01



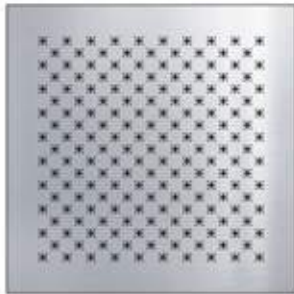
Type-02



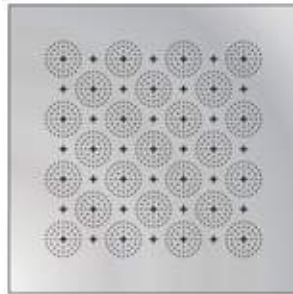
Type-03



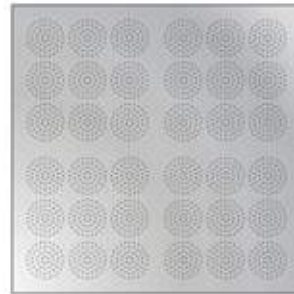
Type-04



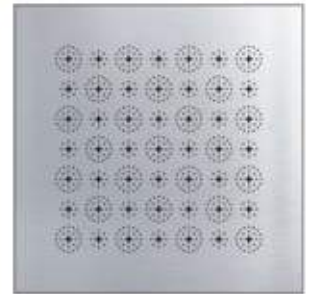
Type-05



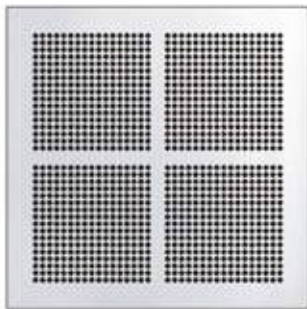
Type-06



Type-07



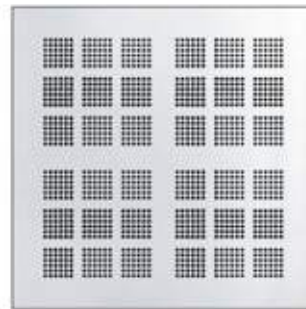
Type-08



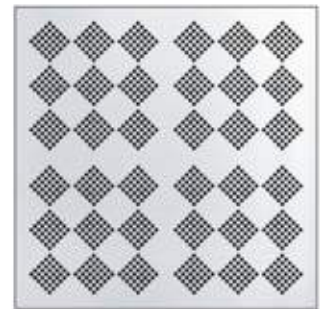
Type-09



Type-10



Type-11



Type-12



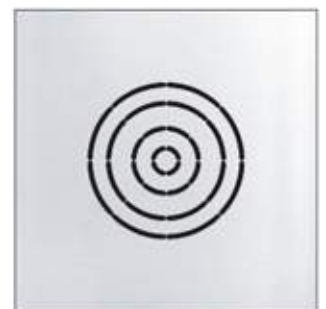
Type-13



Type-14



Type-15



Type-16



Type-17



Type-18



Type-19



Type-20

WALL CLADDING

Decorative perforated wall panels used to enhance exterior and interior spaces.

Wall Cladding can be done in both residential and commercial spaces, made to Client's specifications for Design and Colour.





**RIGID
INDUSTRIES** FZC

D3-02 SAIF ZONE, P.O.BOX:7771, Sharjah- U.A.E.
Tel.:+971-6-5570701, Fax:+971-6-5570702.

sales@rigidind.ae
www.rigidind.com