



SHEET METAL DIVISION

CABLE TRAY



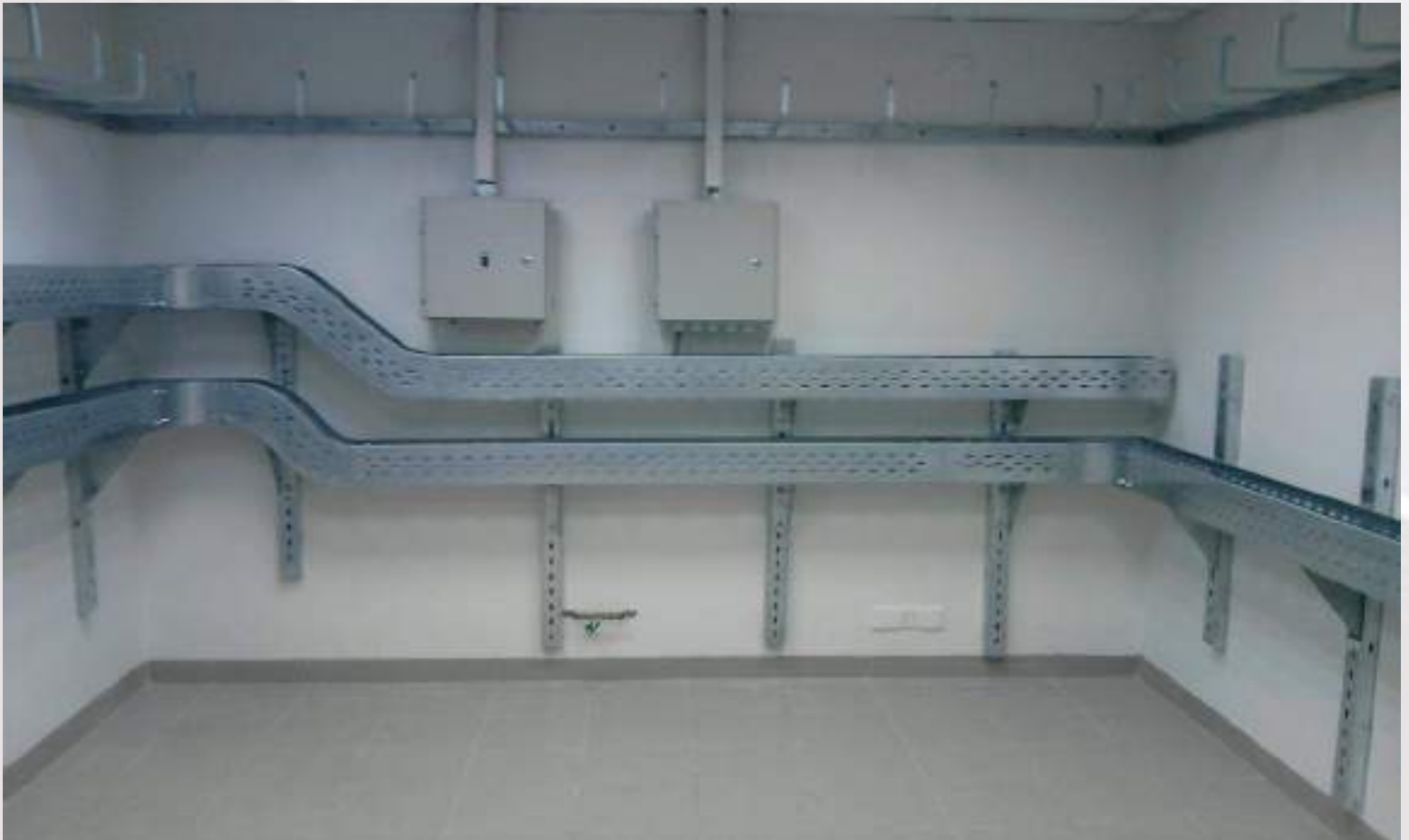
RIGID
INDUSTRIES FZC

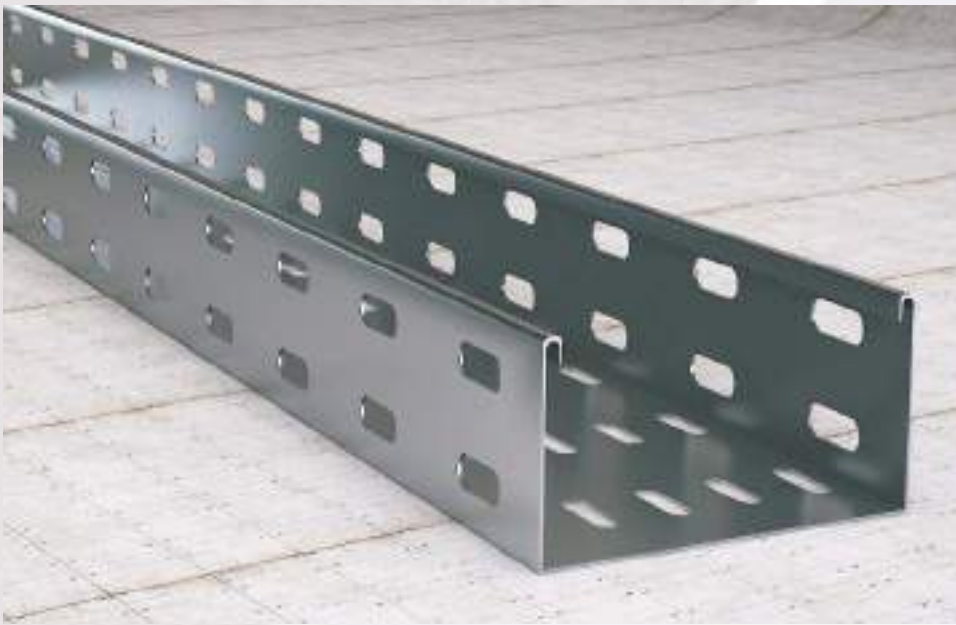
CABLE TRAY SYSTEM

A Cable Tray System is an assembly of Metallic Cable Tray Sections and accessories, that forms a rigid structural system to support cables.

NEED FOR A CABLE TRAY SYSTEM

As technology advances, so too does the need for effective support systems. Today industries and buildings are moving more and more towards automation. Requiring complex system of wiring and cable lying. Cable tray systems offers a quick economical and flexible solutions.





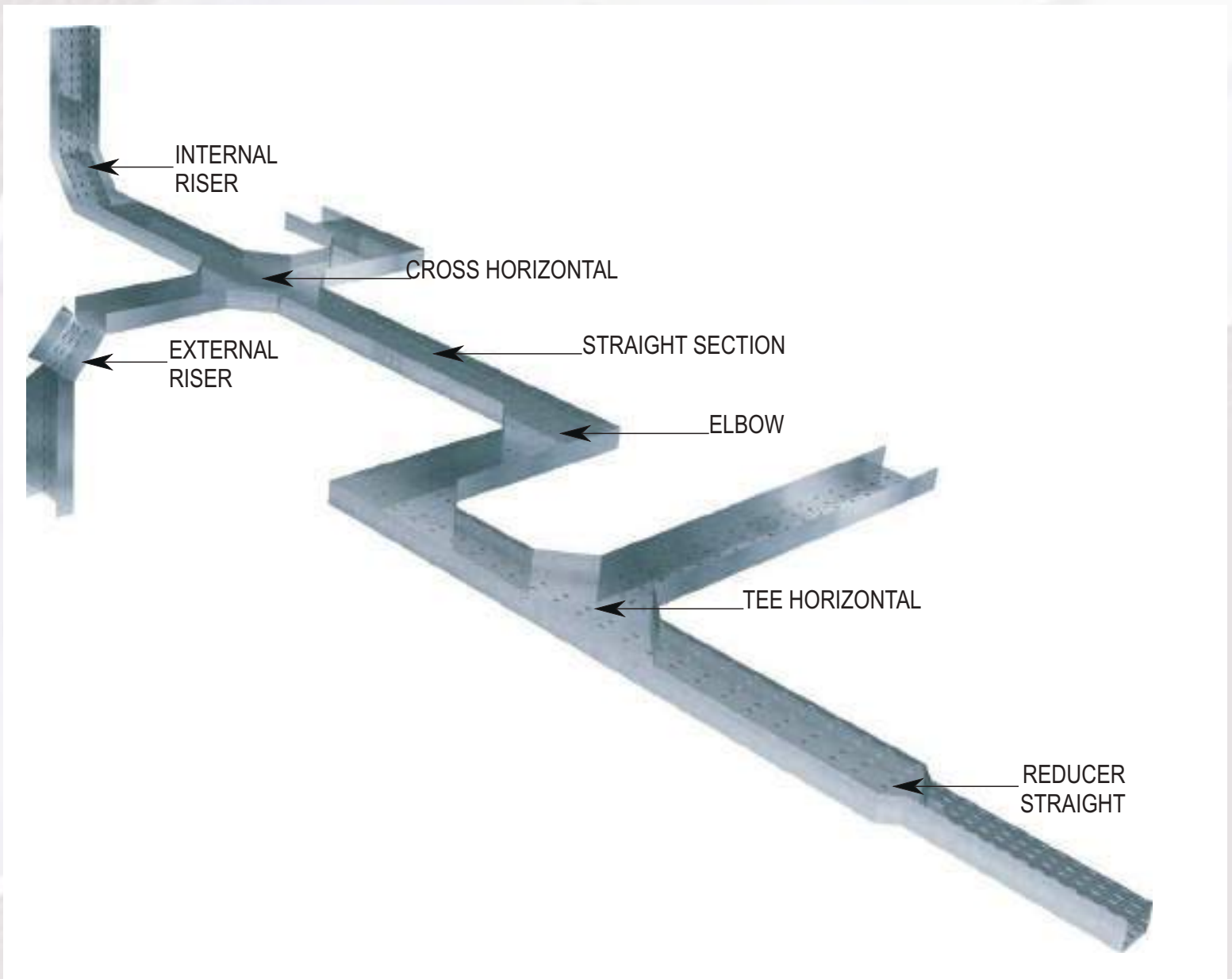
CABLE TRAY SYSTEM

Perforated Cable Tray

Constructed from single sheet of perforated metal. They are convenient for Cables which requires both a degree of protection from external damage and some ventilation to heat producing cable such as power cables.

STANDARD FINISHES

- Hot Dip Galvanized
- Pre Galvanized
- Powder coating to suit client requirements
- Stainless steel finish to required grades
- Aluminum finish



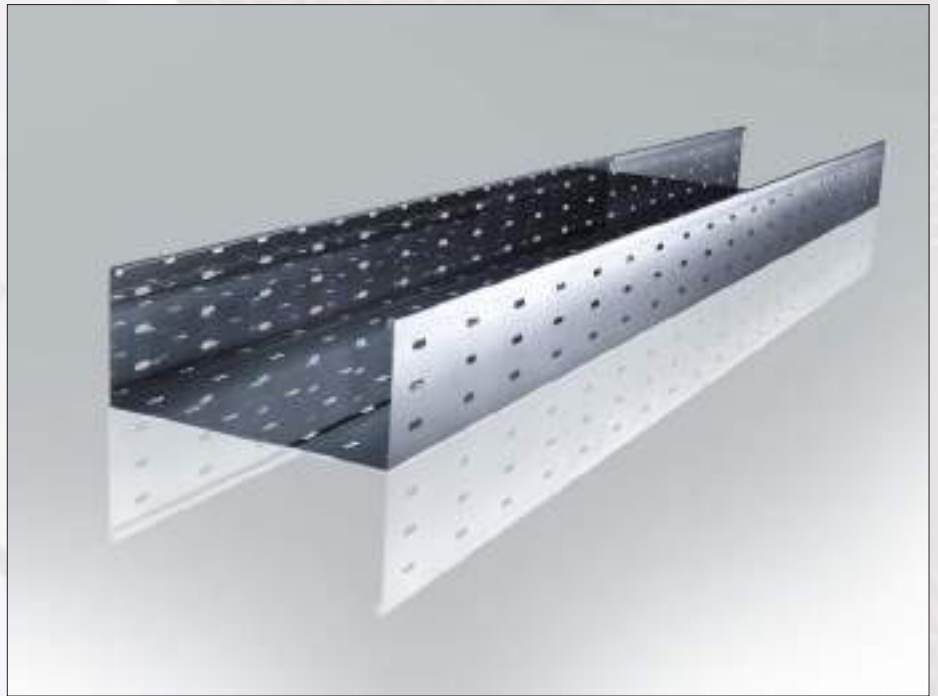
Perfect Designing
Long Term Economy
Easy Installation & Replacement
Cable Tray as an Engineered Product

CABLE TRAY SYSTEM

Perforated Cable Tray

A ventilated tray has openings in the bottom of the tray, allowing some air circulation around the cables, water drainage, and allowing some dust to fall through the tray. The ventilation may be either slots or holes punched.

Tray can also be given solid covers to protect the cables from falling objects, dust and water.



Types of Perforated Cable Trays

1) Light Duty Cable Tray

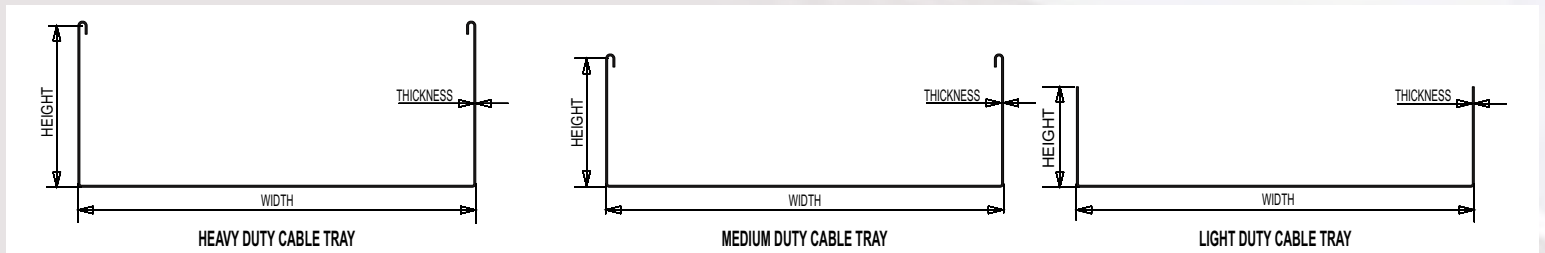
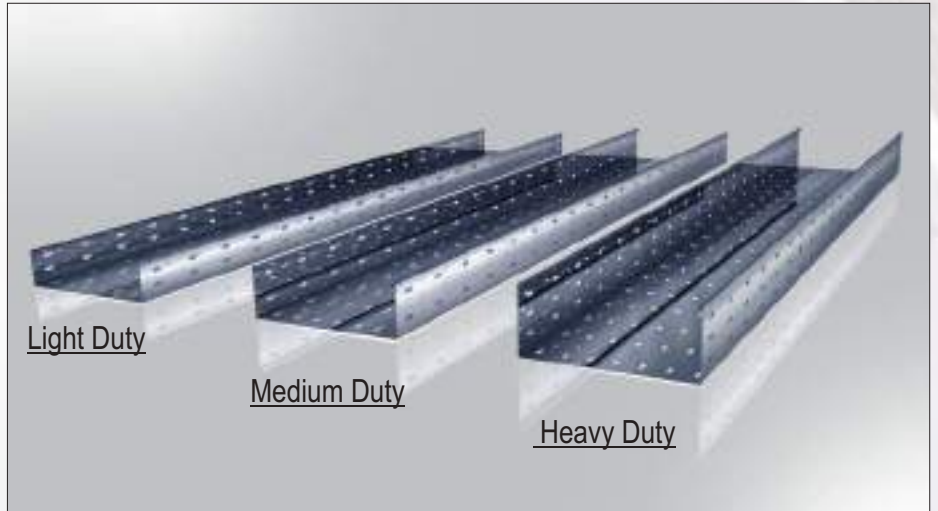
Cable trays are produced with straight flanges and smaller side height for light duty applications.

2) Medium Duty Cable Tray

Cable trays are produced with inside return flanges to provide strength to the component and better load bearing capacity.

3) Heavy Duty Cable Tray

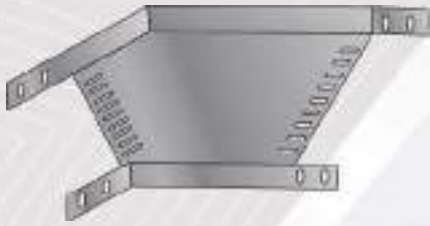
Cable trays are produced with inside return flanges with larger depth for better cable management and increased load bearing capacity.



Standard Dimensions

- Length : 2440mm
- Height : 75mm, 100mm, 150mm
- Width : 100mm, 150mm, 300mm, 600mm, 750mm
- Thickness: 1.2mm, 1.5mm, 2.0mm

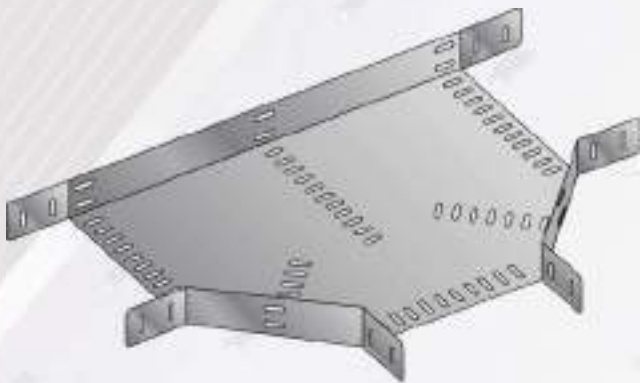
CABLE TRAY FITTINGS



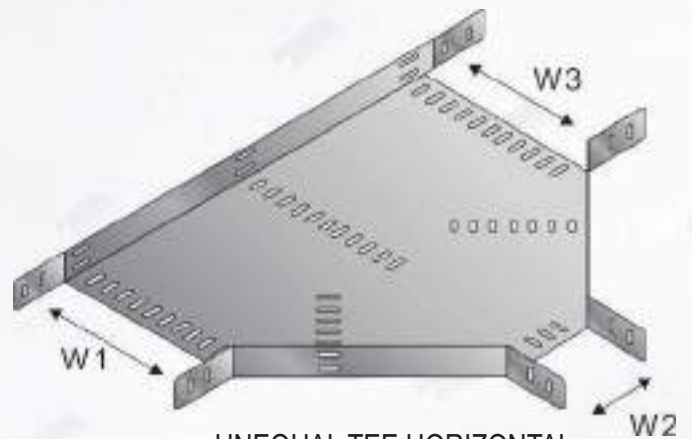
ELBOW 45°



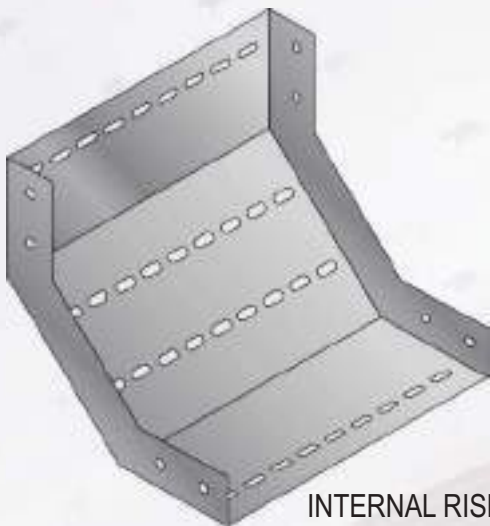
ELBOW 90°



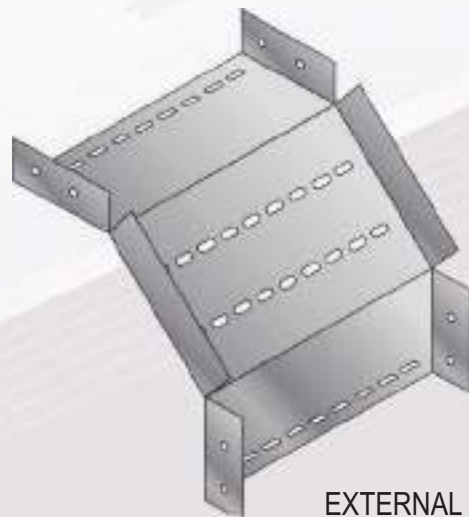
TEE HORIZONTAL



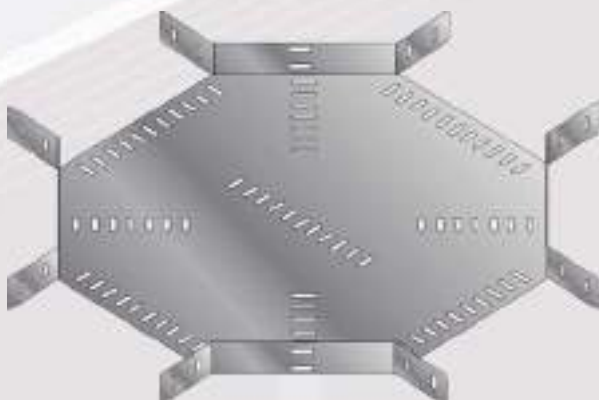
UNEQUAL TEE HORIZONTAL



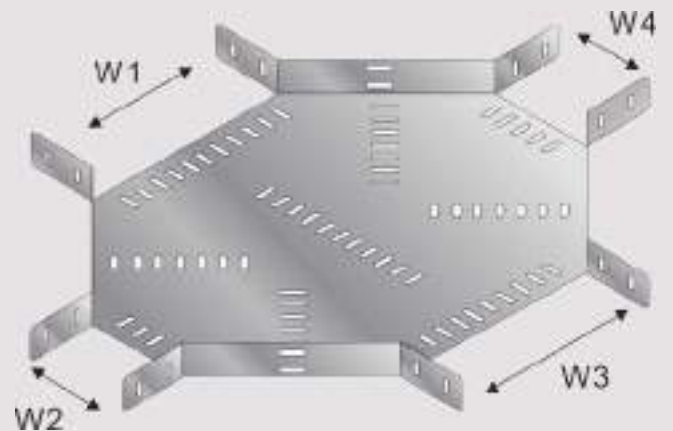
INTERNAL RISER



EXTERNAL RISER



CROSS HORIZONTAL

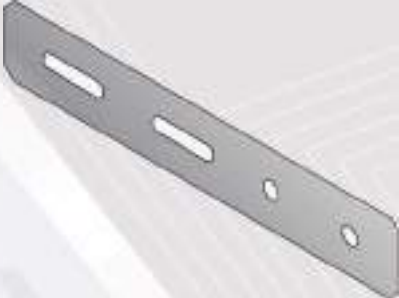


UNEQUAL CROSS HORIZONTAL

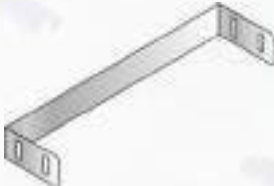
CABLE TRAY FITTINGS



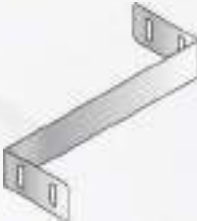
FISH PLATE



STRAIGHT COUPLER



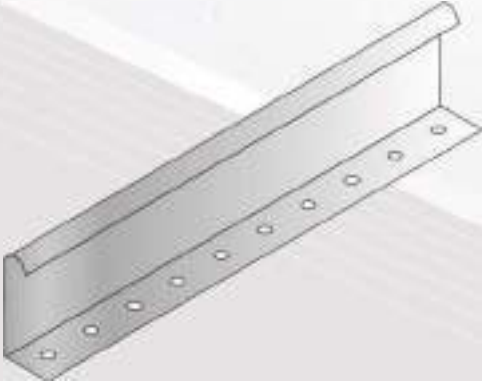
BLIND END



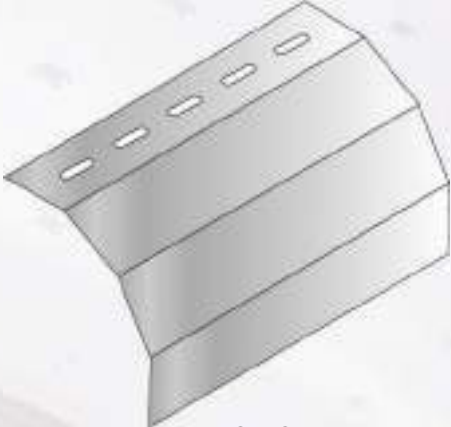
REDUCING CONNECTOR



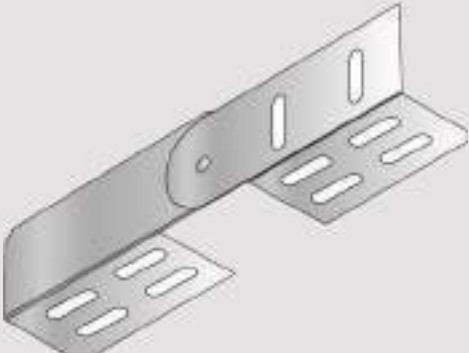
HOLD DOWN CLAMP



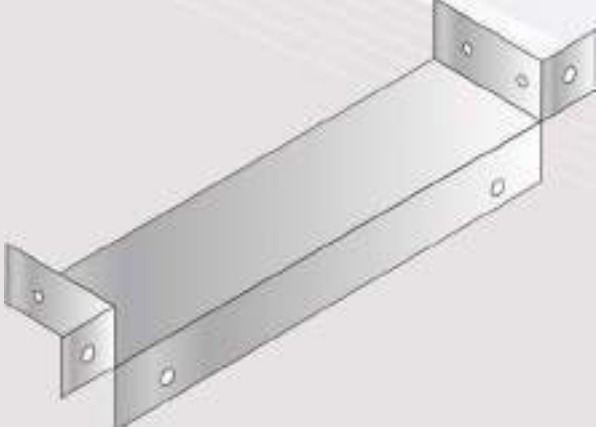
BARRIER STRAIGHT



DROP OUT



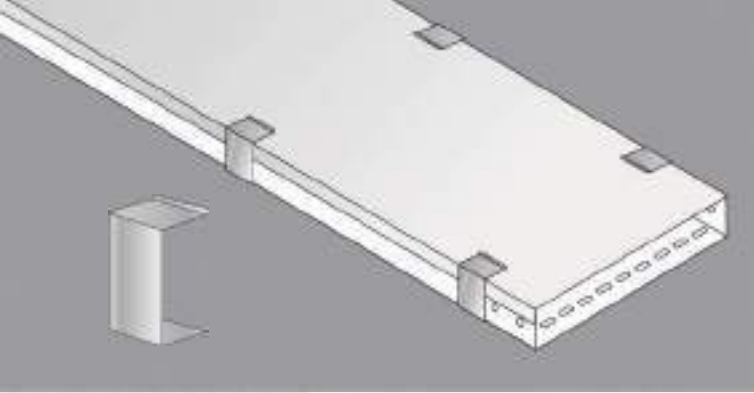
ADJUSTABLE VERTICAL CONNECTOR



BOX CONNECTOR

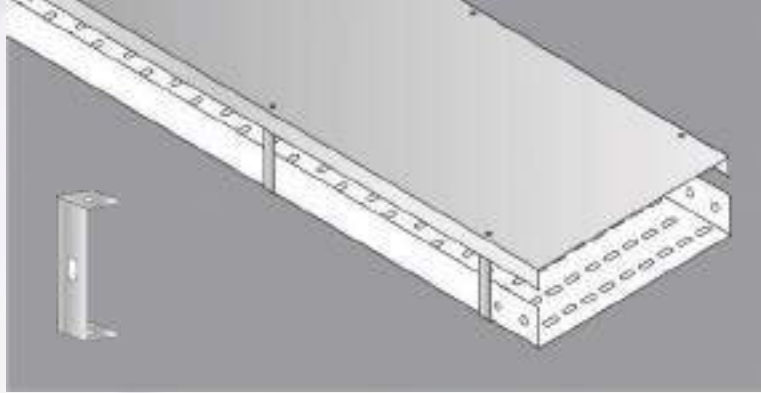
CABLE TRAY COVERS

TYPE-01
CLOSED COVER



Closed Tray Cover can be installed by using either Screw Type or Push Type cover clamps.

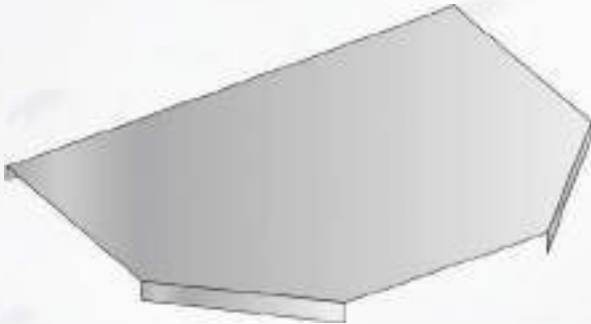
TYPE-02
VENTILATED COVER



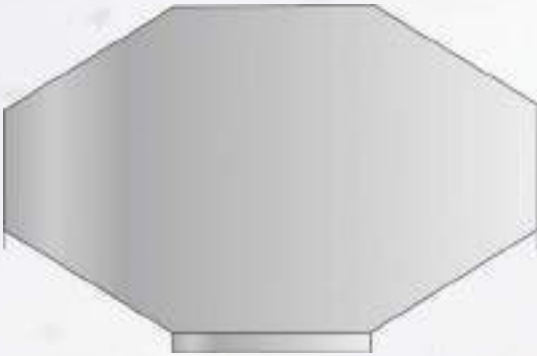
Ventilated Tray Cover can be installed by using Screw Type cover clamps.



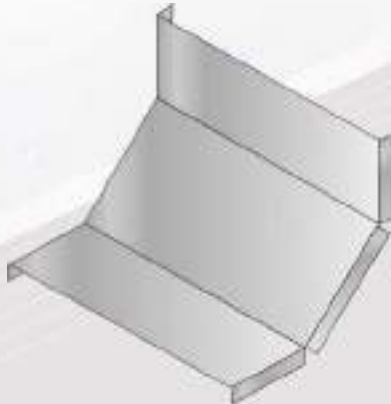
ELBOW HORIZONTAL COVER



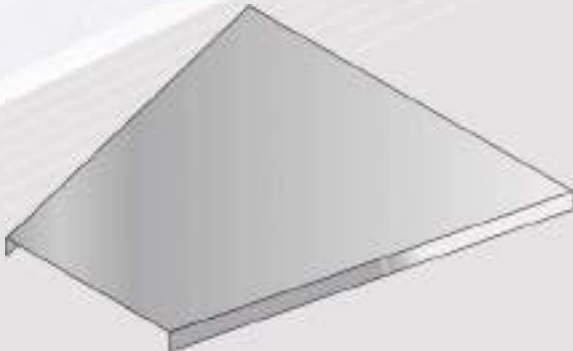
TEE HORIZONTAL COVER



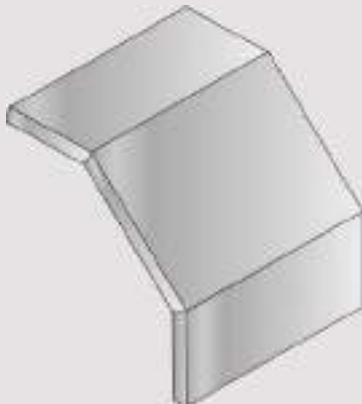
CROSS HORIZONTAL COVER



INSIDE INTERNAL RISER COVER



REDUCER STRAIGHT COVER



OUTSIDE EXTERNAL RISER COVER



RIGID
INDUSTRIES FZC

D3-02 SAIF ZONE, P.O.BOX:7771,Sharjah- U.A.E.
Tel.:+971-6-5570701, Fax:+971-6-5570702.
sales@rigidind.ae
www.rigidind.com